



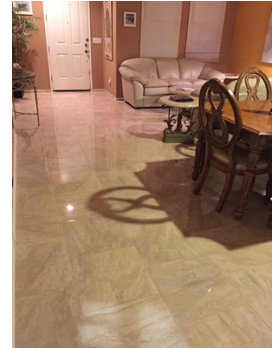
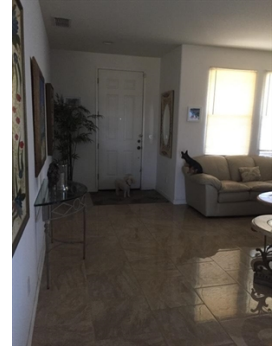
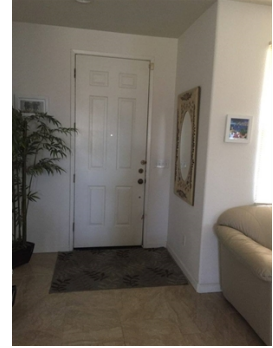
**\$ 405,000**



**250 Red Robin Drive, Patterson, CA 95363**

**WEB: [250RedRobinDrive.IsForSale.com](http://250RedRobinDrive.IsForSale.com)**

- » **Beds:** 5 | **Baths:** 3 Full
- » **MLS #:** 18076039
- » Single Family | 2,943 ft<sup>2</sup> | Lot: 6,534 ft<sup>2</sup>
- » Delightful 2-story home in a corner lot, partial concrete fence, separate family & living room
- » 5-bedroom, 3-bathroom home has a 3-car garage, RV Parking possibility
- » Spacious elegance, marble and Italian tile floors, cozy fireplace, laundry room 2nd floor,
- » Spacious gourmet kitchen, 1 BD & full BA 1st floor, jetted tub, dog run



**Gina Craig, Ph. D.**  
**(209) 509-6348**  
[gina@craigncraigprofrealty.com](mailto:gina@craigncraigprofrealty.com)  
[www.craigncraigprofrealty.com](http://www.craigncraigprofrealty.com)



**Craig & Craig**  
**Professional Realty**

**Craig & Craig Professional Realty**  
 1350 E. Pacheco Blvd.  
 Suite B169  
 Los Banos, CA 93635  
 (209) 826-1157

Huge Price Reduction! You will love this delightful 2-story home in a corner lot. This 5-bedroom, 3-bathroom home has a 3-car garage giving you 2,943 sq. ft. of spacious elegance, marble and Italian tile floors, cozy fireplace, spacious gourmet kitchen & partial concrete fence. Primary features Include: 1 BD & full BA 1st floor, jetted tub, dog run, RV Parking possibility, laundry room 2nd floor, separate family room and formal living room, walking distance to schools and minutes from the national shopping complex. Motivated Seller, all offers are welcome & will review as it comes in.

